



**903 Thanet Tower  
London, E16 1XN  
£2,000 Per Month**

A modern one bedroom apartment situated on the 9th floor of Thanet Tower. The apartment has large floor to ceiling windows, lots of natural sunlight, modern kitchen appliances and an additional storage room.

The residents of Thanet Tower benefit from a 24h concierge service and a private garden.

The property is walking distance from Canning Town Station for both the Jubilee service and DLR.

Close to the forthcoming Asian Business Port, Silvertown Quays and Custom House Crossrail interchange, within close proximity to Excel and London City Airport, and opposite the Emirates Cable Cars.

Transport Links include Royal Victoria DLR station and new Crossrail Interchange both within minutes walking distance.

Council tax - Band B, Newham Council.



Mariano  
Real Estate



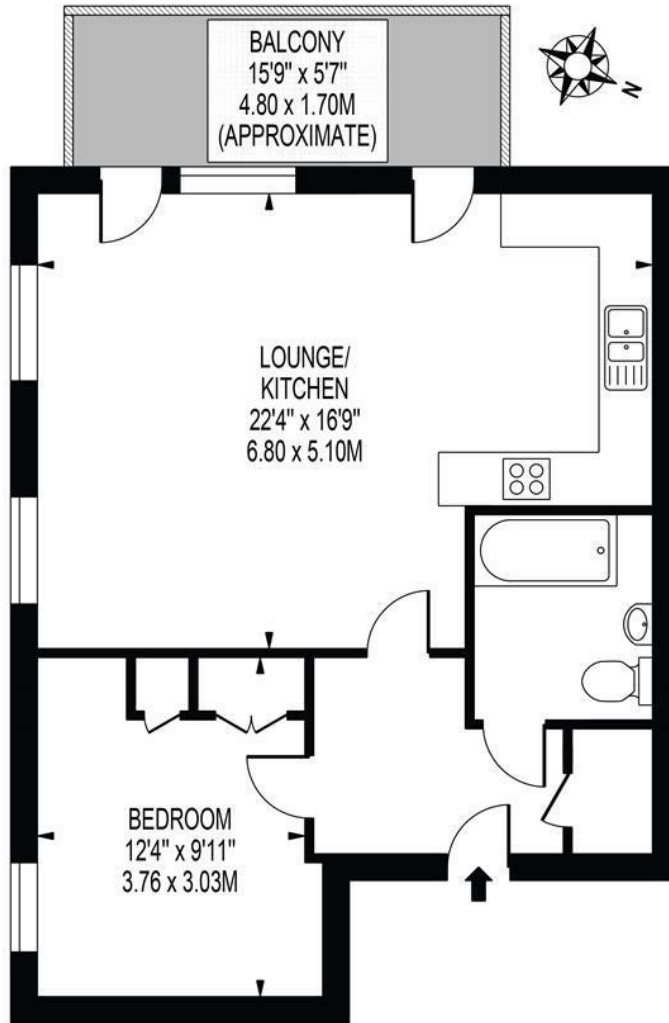




Mariana  
Real Estate

# THANET TOWER

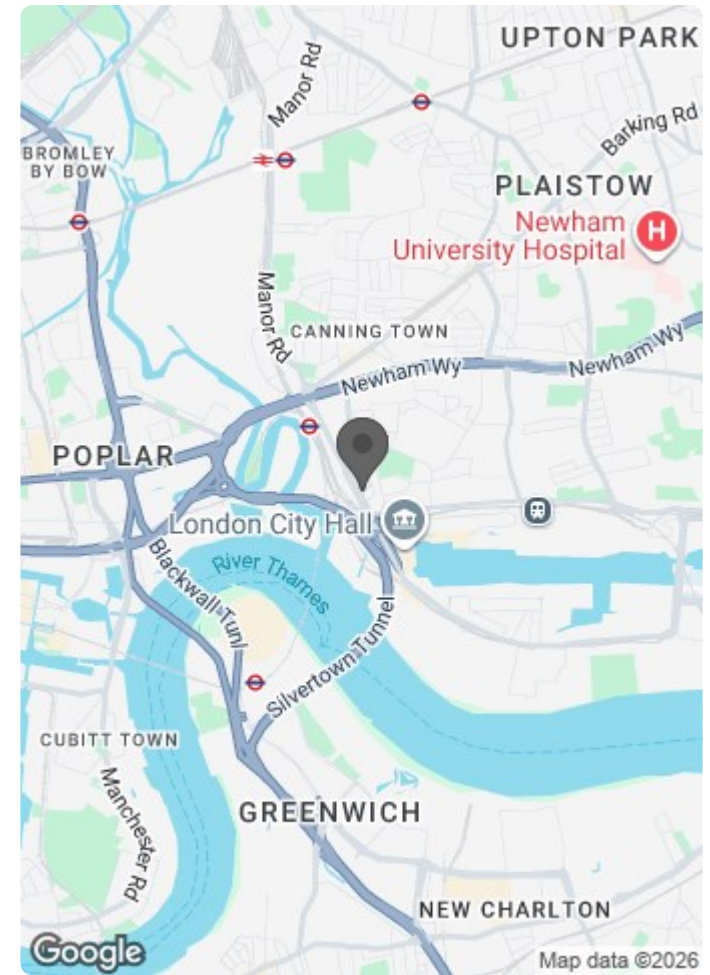
APPROXIMATE GROSS INTERNAL FLOOR AREA: 605 SQ FT - 56.18 SQ M



## NINTH FLOOR

FOR ILLUSTRATION PURPOSES ONLY

THIS FLOOR PLAN SHOULD BE USED AS A GENERAL OUTLINE FOR GUIDANCE ONLY AND DOES NOT CONSTITUTE IN WHOLE OR IN PART AN OFFER OR CONTRACT. ANY INTENDING PURCHASER OR LESSEE SHOULD SATISFY THEMSELVES BY INSPECTION, SEARCHES, ENQUIRIES AND FULL SURVEY AS TO THE CORRECTNESS OF EACH STATEMENT. ANY AREAS, MEASUREMENTS OR DISTANCES QUOTED ARE APPROXIMATE AND SHOULD NOT BE USED TO VALUE A PROPERTY OR BE THE BASIS OF ANY SALE OR LET.



Energy Efficiency Rating		Current	Potential
Very energy efficient - lower running costs			
(92 plus) A			
(81-91) B		85	85
(69-80) C			
(55-68) D			
(39-54) E			
(21-38) F			
(1-20) G			
Not energy efficient - higher running costs			
England & Wales		EU Directive 2002/91/EC	

Environmental Impact (CO <sub>2</sub> ) Rating		Current	Potential
Very environmentally friendly - lower CO <sub>2</sub> emissions			
(92 plus) A			
(81-91) B			
(69-80) C			
(55-68) D			
(39-54) E			
(21-38) F			
(1-20) G			
Not environmentally friendly - higher CO <sub>2</sub> emissions			
England & Wales		EU Directive 2002/91/EC	